

Essentials of Human Anatomy & Physiology

GLOBAL
EDITION



THIRTEENTH EDITION

ELAINE N. MARIEB, R.N., PH.D.,
HOLYOKE COMMUNITY COLLEGE

SUZANNE M. KELLER, PH.D.,
INDIAN HILLS COMMUNITY COLLEGE



Contents

1 The Human Body: An Orientation 23

1.1 An Overview of Anatomy and Physiology 23

1.1a Anatomy 23

1.1b Physiology 24

1.1c Relationship between Anatomy and Physiology 24

1.2 Levels of Structural Organization 24

1.2a From Atoms to Organisms 24

1.2b Organ System Overview 25

Integumentary System • Skeletal System • Muscular System • Nervous System • Endocrine System • Cardiovascular System • Lymphatic System • Respiratory System • Digestive System • Urinary System • Reproductive System

1.3 Maintaining Life 29

1.3a Necessary Life Functions 29

Maintaining Boundaries • Movement • Responsiveness • Digestion • Metabolism • Excretion • Reproduction • Growth

1.3b Survival Needs 31

1.4 The Language of Anatomy 32

1.4a Anatomical Position 33

1.4b Directional Terms 33

1.4c Regional Terms 35

Anterior Body Landmarks • Posterior Body Landmarks

1.4d Body Planes and Sections 36

1.4e Body Cavities 38

Dorsal Body Cavity • Ventral Body Cavity • Other Body Cavities

1.5 Homeostasis 40

1.5a Components of Homeostatic Control Systems 40

1.5b Feedback Mechanisms 41

SUMMARY 42

REVIEW QUESTIONS 43

CRITICAL THINKING AND CLINICAL APPLICATION QUESTIONS 44

A CLOSER LOOK Medical Imaging: Illuminating the Body 32

2 Basic Chemistry 45

2.1 Concepts of Matter and Energy 45

2.1a Matter 45

2.1b Energy 46

Forms of Energy • Energy Form Conversions

2.2 Composition of Matter 47

2.2a Elements and Atoms 47

2.2b Atomic Structure 47

The Basic Atomic Subparticles • Planetary and Orbital Models of an Atom

2.2c Identifying Elements 49

Atomic Number • Atomic Mass Number • Atomic Weight and Isotopes

2.3 Molecules and Compounds 52

2.4 Chemical Bonds and Chemical Reactions 53

2.4a Bond Formation 53

Role of Electrons • Types of Chemical Bonds

2.4b Patterns of Chemical Reactions 57

Synthesis Reactions • Decomposition Reactions

• Exchange Reactions • Factors Influencing the Rate of Chemical Reactions

2.5 Biochemistry: The Chemical Composition of Living Matter 59

2.5a Inorganic Compounds 60

Water • Salts • Acids and Bases

2.5b Organic Compounds 63

Carbohydrates • Lipids • Proteins • Nucleic Acids • Adenosine Triphosphate (ATP)

SUMMARY 77

REVIEW QUESTIONS 80

CRITICAL THINKING AND CLINICAL APPLICATION QUESTIONS 81

FOCUS ON CAREERS Pharmacy Technician 75

3 Cells and Tissues 82

PART I: CELLS 82

3.1 Overview of the Cellular Basis of Life 82

3.2 Anatomy of a Generalized Cell 83

3.2a The Plasma Membrane 83

The Fluid Mosaic Model • Cell Membrane Junctions

3.2b The Nucleus 85

Nuclear Envelope • Nucleolus • Chromatin

3.2c The Cytoplasm 87

Cytosol and Inclusions • Organelles

3.2d Cell Extensions 91

Cilia and Flagella • Microvilli

3.2e Cell Diversity 94

3.3 Cell Physiology 96

3.3a Membrane Transport 96

Passive Processes: Diffusion and Filtration • Active Processes

3.3b Cell Division 102

Preparations: DNA Replication • Events of Cell Division

3.3c Protein Synthesis 105

Genes: The Blueprint for Protein Structure • The Role of RNA • The Process of Protein Synthesis

PART II: BODY TISSUES 108

3.4 Epithelial Tissue 108

3.4a Hallmarks of Epithelium 108

3.4b Classification of Epithelia 109

Simple Epithelia • Stratified Epithelia • Glandular Epithelium

3.5 Connective Tissue 113

3.5a Hallmarks of Connective Tissue 113

3.5b Extracellular Matrix 114

3.5c Types of Connective Tissue 114

Bone • Cartilage • Dense Connective Tissue • Loose Connective Tissue • Blood

3.6 Muscle Tissue 118

3.6a Skeletal Muscle 118

3.6b Cardiac Muscle 118

3.6c Smooth Muscle 120

3.7 Nervous Tissue 120

3.8 Tissue Repair (Wound Healing) 120

SUMMARY 124

REVIEW QUESTIONS 126

CRITICAL THINKING AND CLINICAL APPLICATION QUESTIONS 127

A CLOSER LOOK IV Therapy and Cellular “Tonics” 99

A CLOSER LOOK Cancer—An Intimate Enemy 123

4 Skin and Body Membranes 128

4.1 Classification of Body Membranes 128

4.1a Epithelial Membranes 129

Cutaneous Membrane • Mucous Membranes • Serous Membranes

4.1b Connective Tissue Membranes 129

4.2 The Integumentary System (Skin) 131

4.2a Functions of the Integumentary System 131

4.2b Structure of the Skin 132

Epidermis • Dermis

4.2c Skin Color 137

4.2d Appendages of the Skin 138

Cutaneous Glands • Hair and Hair Follicles • Nails

4.2e Homeostatic Imbalances of Skin 142

Infections and Allergies • Burns • Skin Cancer

4.3 Developmental Aspects of Skin and Body Membranes 146

SUMMARY 148

REVIEW QUESTIONS 150

CRITICAL THINKING AND CLINICAL APPLICATION QUESTIONS 151

A CLOSER LOOK A Wrinkle Out of Time 136

FOCUS ON CAREERS Medical Transcriptionist 146

SYSTEMS IN SYNC 147

5 The Skeletal System 152

5.1 Bones: An Overview 152

- 5.1a Functions of the Bones 153
- 5.1b Classification of Bones 153
- 5.1c Structure of Bone 154
 - Gross Anatomy of a Long Bone • Microscopic Anatomy
- 5.1d Bone Formation, Growth, and Remodeling 157
 - Bone Formation and Growth • Bone Remodeling
- 5.1e Bone Fractures 161

5.2 Axial Skeleton 164

- 5.2a Skull 164
 - Cranium • Facial Bones • The Hyoid Bone
- 5.2b Vertebral Column (Spine) 171
 - Cervical Vertebrae • Thoracic Vertebrae • Lumbar Vertebrae • Sacrum • Coccyx
- 5.2c Thoracic Cage 173
 - Sternum • Ribs

5.3 Appendicular Skeleton 175

- 5.3a Bones of the Shoulder Girdle 176
- 5.3b Bones of the Upper Limbs 178
 - Arm • Forearm • Hand
- 5.3c Bones of the Pelvic Girdle 179
- 5.3d Bones of the Lower Limbs 182
 - Thigh • Leg • Foot

5.4 Joints 185

- 5.4a Fibrous Joints 185
- 5.4b Cartilaginous Joints 185
- 5.4c Synovial Joints 185
- 5.4d Types of Synovial Joints Based on Shape 187

5.5 Developmental Aspects of the Skeleton 191

- 5.5a Birth to Adulthood 191
- 5.5b Older Adults 192

SUMMARY 195

REVIEW QUESTIONS 196

CRITICAL THINKING AND CLINICAL APPLICATION QUESTIONS 198

- FOCUS ON CAREERS** Radiologic Technologist 161
- A CLOSER LOOK** Joint Ventures 184
- SYSTEMS IN SYNC** 194

6 The Muscular System 199

6.1 Overview of Muscle Tissues 199

- 6.1a Muscle Types 199
 - Skeletal Muscle • Smooth Muscle • Cardiac Muscle
- 6.1b Muscle Functions 203
 - Produce Movement • Maintain Posture and Body Position • Stabilize Joints • Generate Heat • Additional Functions

6.2 Microscopic Anatomy of Skeletal Muscle 203

6.3 Skeletal Muscle Activity 205

- 6.3a Stimulation and Contraction of Single Skeletal Muscle Fibers 205
 - The Nerve Stimulus and the Action Potential
 - Mechanism of Muscle Contraction: The Sliding Filament Theory
- 6.3b Contraction of a Skeletal Muscle as a Whole 210
 - Graded Responses • Providing Energy for Muscle Contraction • Muscle Fatigue and Oxygen Deficit
 - Types of Muscle Contractions—Isotonic and Isometric
 - Muscle Tone • Effect of Exercise on Muscles

6.4 Muscle Movements, Roles, and Names 214

- 6.4a Types of Body Movements 214
 - Special Movements
- 6.4b Interactions of Skeletal Muscles in the Body 218
- 6.4c Naming Skeletal Muscles 220
- 6.4d Arrangement of Fascicles 220

6.5 Gross Anatomy of Skeletal Muscles 221

- 6.5a Head and Neck Muscles 221
 - Facial Muscles • Neck Muscles
- 6.5b Trunk Muscles 223
 - Anterior Muscles • Posterior Muscles

Chapter 6, continued

6.5c Muscles of the Upper Limb 226

Muscles Causing Movement at the Elbow Joint

6.5d Muscles of the Lower Limb 227

Muscles Causing Movement at the Hip Joint • Muscles Causing Movement at the Knee Joint • Muscles Causing Movement at the Ankle and Foot

6.6 Developmental Aspects of the Muscular System 231**SUMMARY 238****REVIEW QUESTIONS 240****CRITICAL THINKING AND CLINICAL APPLICATION QUESTIONS 241****A CLOSER LOOK** Anabolic Steroids: Dying to Win? 223**SYSTEMS IN SYNC 237**

7

The Nervous System 242**7.1 Organization of the Nervous System 243**

7.1a Structural Classification 244

7.1b Functional Classification 244

7.2 Nervous Tissue: Structure and Function 244

7.2a Supporting Cells 244

7.2b Neurons 246

Anatomy • Classification

7.2c Physiology: Nerve Impulses 251

7.2d Physiology: Reflexes 254

7.3 Central Nervous System 256

7.3a Functional Anatomy of the Brain 256

Cerebral Hemispheres • Diencephalon • Brain Stem • Cerebellum

7.3b Protection of the Central Nervous System 264

Meninges • Cerebrospinal Fluid • The Blood-Brain Barrier

7.3c Brain Dysfunctions 268

7.3d Spinal Cord 270

Gray Matter of the Spinal Cord and Spinal Roots
• White Matter of the Spinal Cord**7.4 Peripheral Nervous System 273**

7.4a Structure of a Nerve 273

7.4b Cranial Nerves 274

7.4c Spinal Nerves and Nerve Plexuses 274

7.4d Autonomic Nervous System 274

Somatic and Autonomic Nervous Systems Compared
• Anatomy of the Parasympathetic Division • Anatomy of the Sympathetic Division • Autonomic Functioning**7.5 Developmental Aspects of the Nervous System 285****SUMMARY 289****REVIEW QUESTIONS 292****CRITICAL THINKING AND CLINICAL APPLICATION QUESTIONS 293****A CLOSER LOOK** The “Terrible Three” 268**A CLOSER LOOK** Tracking Down CNS Problems 287**SYSTEMS IN SYNC 288**

8

Special Senses 294**PART I: THE EYE AND VISION 295****8.1 Anatomy of the Eye 295**

8.1a External and Accessory Structures 295

8.1b Internal Structures: The Eyeball 297

Layers Forming the Wall of the Eyeball • Lens

8.2 Physiology of Vision 303

8.2a Pathway of Light through the Eye and Light Refraction 303

8.2b Visual Fields and Visual Pathways to the Brain 304

8.2c Eye Reflexes 306

PART II: THE EAR: HEARING AND BALANCE 306**8.3 Anatomy of the Ear 307**

8.3a External (Outer) Ear 307

- 8.3b Middle Ear 308
- 8.3c Internal (Inner) Ear 308

8.4 Hearing 308

8.5 Equilibrium 311

- 8.5a Static Equilibrium 311
- 8.5b Dynamic Equilibrium 312
- 8.5c Hearing and Equilibrium Deficits 313

PART III: CHEMICAL SENSES: SMELL AND TASTE 314

8.6 Olfactory Receptors and the Sense of Smell 314

8.7 Taste Buds and the Sense of Taste 315

PART IV: DEVELOPMENTAL ASPECTS OF THE SPECIAL SENSES 317

SUMMARY 319

REVIEW QUESTIONS 321

CRITICAL THINKING AND CLINICAL
APPLICATION QUESTIONS 323

A CLOSER LOOK Visual Pigments—The Actual
Photoreceptors 301

A CLOSER LOOK Bringing Things into Focus 305

FOCUS ON CAREERS Physical Therapy
Assistant 313

9

The Endocrine System 324

9.1 The Endocrine System and Hormone Function—An Overview 325

- 9.1a The Chemistry of Hormones 325
- 9.1b Hormone Action 325
 - Direct Gene Activation • Second-Messenger System
- 9.1c Stimuli for Control of Hormone Release 327
 - Hormonal Stimuli • Humoral Stimuli • Neural Stimuli

9.2 The Major Endocrine Organs 328

- 9.2a Pituitary Gland and Hypothalamus 329
 - Pituitary-Hypothalamus Relationships

- 9.2b Pineal Gland 332
- 9.2c Thyroid Gland 333
- 9.2d Parathyroid Glands 335

9.2e Thymus 336

9.2f Adrenal Glands 336

Hormones of the Adrenal Cortex • Hormones of the
Adrenal Medulla

9.2g Pancreatic Islets 340

9.2h Gonads 341

Hormones of the Ovaries • Hormones of the Testes

9.3 Other Hormone-Producing Tissues and Organs 345

9.4 Developmental Aspects of the Endocrine System 345

SUMMARY 348

REVIEW QUESTIONS 351

CRITICAL THINKING AND CLINICAL
APPLICATION QUESTIONS 352

A CLOSER LOOK Potential Uses for Growth
Hormone 332

SYSTEMS IN SYNC 347

10

Blood 353

10.1 Composition and Functions of Blood 353

- 10.1a Components 354
- 10.1b Physical Characteristics and
Volume 354
- 10.1c Plasma 354
- 10.1d Formed Elements 354
 - Erythrocytes • Leukocytes • Platelets
- 10.1e Hematopoiesis (Blood Cell
Formation) 360
 - Formation of Red Blood Cells • Formation of White
Blood Cells and Platelets

10.2 Hemostasis 362

- 10.2a Phases of Hemostasis 363
- 10.2b Disorders of Hemostasis 364

Chapter 10, continued

10.3 Blood Groups and Transfusions 365

10.3a Human Blood Groups 365

10.3b Blood Typing 366

10.4 Developmental Aspects of Blood 368

SUMMARY 369

REVIEW QUESTIONS 370

CRITICAL THINKING AND CLINICAL APPLICATION QUESTIONS 372

FOCUS ON CAREERS Phlebotomy Technician 367

11 The Cardiovascular System 373**11.1 The Heart 374**

11.1a Anatomy of the Heart 374

Size, Location, and Orientation • Coverings and Walls of the Heart

11.1b Chambers and Associated Great Vessels 375

11.1c Heart Valves 378

Cardiac Circulation

11.1d Physiology of the Heart 381

Intrinsic Conduction System of the Heart: Setting the Basic Rhythm • Cardiac Cycle and Heart Sounds
• Cardiac Output**11.2 Blood Vessels 387**

11.2a Microscopic Anatomy of Blood Vessels 388

Tunics • Structural Differences in Arteries, Veins, and Capillaries

11.2b Gross Anatomy of Blood Vessels 391

Major Arteries of the Systemic Circulation • Major Veins of the Systemic Circulation • Special Circulations

11.2c Physiology of Circulation 396

Arterial Pulse • Blood Pressure • Capillary Exchange of Gases and Nutrients • Fluid Movements at Capillary Beds

11.3 Developmental Aspects of the Cardiovascular System 405

SUMMARY 409

REVIEW QUESTIONS 411

CRITICAL THINKING AND CLINICAL APPLICATION QUESTIONS 413

A CLOSER LOOK Electrocardiography: (Don't) Be Still My Heart 384

A CLOSER LOOK Atherosclerosis? Get Out the Cardiovascular Plumber's Snake! 403

SYSTEMS IN SYNC 408

12 The Lymphatic System and Body Defenses 414**PART I: THE LYMPHATIC SYSTEM 414**

12.1 Lymphatic Vessels 415

12.2 Lymph Nodes 416

12.3 Other Lymphoid Organs 418

PART II: BODY DEFENSES 419

12.4 Innate Body Defenses 420

12.4a Surface Membrane Barriers: First Line of Defense 420

12.4b Cells and Chemicals: Second Line of Defense 422

Natural Killer Cells • Inflammatory Response
• Phagocytes • Antimicrobial Proteins • Fever

12.5 Adaptive Body Defenses 427

12.5a Antigens 428

12.5b Cells of the Adaptive Defense System: An Overview 428

Lymphocytes • Antigen-Presenting Cells

12.5c Humoral (Antibody-Mediated) Immune Response 431

Active and Passive Humoral Immunity • Antibodies

12.5d Cellular (Cell-Mediated) Immune Response 436

12.5e Organ Transplants and Rejection 438

12.5f Disorders of Immunity 443

PART III: DEVELOPMENTAL ASPECTS OF THE LYMPHATIC SYSTEM AND BODY DEFENSES 446

SUMMARY 449

REVIEW QUESTIONS 451

CRITICAL THINKING AND CLINICAL APPLICATION QUESTIONS 453

A CLOSER LOOK COVID-19: A Global Pandemic 440

A CLOSER LOOK AIDS: An Ongoing Pandemic 446

SYSTEMS IN SYNC 448

13 The Respiratory System 454

13.1 Functional Anatomy of the Respiratory System 454

13.1a The Nose 455

13.1b The Pharynx 456

13.1c The Larynx 457

13.1d The Trachea 458

13.1e The Main Bronchi 458

13.1f The Lungs 459

The Bronchial Tree • Respiratory Zone Structures and the Respiratory Membrane

13.2 Respiratory Physiology 463

13.2a Mechanics of Breathing 463

Inspiration • Expiration

13.2b Respiratory Volumes and Capacities 466

Nonrespiratory Air Movements • Respiratory Sounds

13.2c External Respiration, Gas Transport, and Internal Respiration 467

External Respiration • Gas Transport in the Blood
• Internal Respiration

13.2d Control of Respiration 470

Neural Regulation: Setting the Basic Rhythm
• Nonneural Factors Influencing Respiratory Rate and Depth

13.3 Respiratory Disorders 472

13.4 Developmental Aspects of the Respiratory System 475

SUMMARY 477

REVIEW QUESTIONS 480

CRITICAL THINKING AND CLINICAL APPLICATION QUESTIONS 481

A CLOSER LOOK Too Clean for Our Own Good? 474

SYSTEMS IN SYNC 476

14 The Digestive System and Body Metabolism 482

PART I: ANATOMY AND PHYSIOLOGY OF THE DIGESTIVE SYSTEM 482

14.1 Anatomy of the Digestive System 482

14.1a Organs of the Alimentary Canal 483

Mouth • Pharynx • Esophagus • Stomach • Small Intestine • Large Intestine

14.1b Accessory Digestive Organs 492

Teeth • Salivary Glands • Pancreas • Liver and Gallbladder

14.2 Functions of the Digestive System 496

14.2a Overview of Gastrointestinal Processes and Controls 496

14.2b Activities Occurring in the Mouth, Pharynx, and Esophagus 498

Food Ingestion and Breakdown • Food Propulsion—Swallowing and Peristalsis

14.2c Activities of the Stomach 500

Food Breakdown • Food Propulsion

14.2d Activities of the Small Intestine 502

Chyme Breakdown and Absorption • Chyme Propulsion

14.2e Activities of the Large Intestine 504

Nutrient Breakdown and Absorption • Propulsion of Food Residue and Defecation

14.2f The Microbiota 505

PART II: NUTRITION AND METABOLISM 507

14.3 Nutrition 507

14.3a Dietary Recommendations 507

Chapter 14, continued

14.3b Dietary Sources of the Major Nutrients 508

Carbohydrates • Lipids • Proteins • Vitamins • Minerals

14.4 Metabolism 510

14.4a Carbohydrate, Fat, and Protein Metabolism in Body Cells 510

Carbohydrate Metabolism • Fat Metabolism • Protein Metabolism

14.4b The Central Role of the Liver in Metabolism 513

General Metabolic Functions • Cholesterol Metabolism and Transport

14.4c Body Energy Balance 516

Regulation of Food Intake • Metabolic Rate and Body Heat Production • Body Temperature Regulation

PART III: DEVELOPMENTAL ASPECTS OF THE DIGESTIVE SYSTEM AND METABOLISM 521

SUMMARY 524

REVIEW QUESTIONS 530

CRITICAL THINKING AND CLINICAL APPLICATION QUESTIONS 532

A CLOSER LOOK Peptic Ulcers: “Something Is Eating at Me” 506**A CLOSER LOOK** Obesity: Magical Solution Wanted 522**SYSTEMS IN SYNC** 523

15 The Urinary System 533

15.1 Kidneys 534

15.1a Location and Structure 534

Kidney Structure • Blood Supply

15.1b Nephrons 535

15.1c Urine Formation and Characteristics 538

Glomerular Filtration • Tubular Reabsorption • Tubular Secretion • Nitrogenous Wastes • Characteristics of Urine

15.2 Ureters, Urinary Bladder, and Urethra 542

15.2a Ureters 542

15.2b Urinary Bladder 543

15.2c Urethra 544

15.2d Micturition 544

15.3 Fluid, Electrolyte, and Acid-Base Balance 546

15.3a Maintaining Water Balance of Blood 546

Body Fluids and Fluid Compartments • The Link between Water and Electrolytes • Regulation of Water Intake and Output

15.3b Maintaining Electrolyte Balance 549

15.3c Maintaining Acid-Base Balance of Blood 551

Blood Buffers • Respiratory Mechanisms • Renal Mechanisms

15.4 Developmental Aspects of the Urinary System 553

SUMMARY 557

REVIEW QUESTIONS 559

CRITICAL THINKING AND CLINICAL APPLICATION QUESTIONS 561

A CLOSER LOOK Renal Failure and the Artificial Kidney 545**FOCUS ON CAREERS** Licensed Practical Nurse (LPN) 554**SYSTEMS IN SYNC** 556

16 The Reproductive System 562

16.1 Anatomy of the Male Reproductive System 563

16.1a Testes 563

16.1b Duct System 563

Epididymis • Ductus Deferens • Urethra

16.1c Accessory Glands and Semen 565

Seminal Vesicles • Prostate • Bulbourethral Glands • Semen

16.1d External Genitalia 566

16.2 Male Reproductive Functions 567

16.2a Spermatogenesis 567

16.2b Testosterone Production 569

16.3 Anatomy of the Female Reproductive System 571

16.3a Ovaries 571

16.3b Duct System 571

Uterine Tubes • Uterus • Vagina

16.3c External Genitalia and Female Perineum 574

16.4 Female Reproductive Functions and Cycles 575

16.4a Oogenesis and the Ovarian Cycle 575

16.4b Hormone Production by the Ovaries 577

16.4c Uterine (Menstrual) Cycle 578

16.5 Mammary Glands 578

16.6 Pregnancy and Embryonic Development 581

16.6a Accomplishing Fertilization 582

16.6b Events of Embryonic and Fetal Development 583

16.6c Effects of Pregnancy on the Mother 587

Anatomical Changes • Physiological Changes

16.6d Childbirth 589

Initiation of Labor • Stages of Labor

16.7 Developmental Aspects of the Reproductive System 591

SUMMARY 595

REVIEW QUESTIONS 599

CRITICAL THINKING AND CLINICAL APPLICATION QUESTIONS 601

A CLOSER LOOK Contraception: Preventing Pregnancy 592

SYSTEMS IN SYNC 594

Appendixes

Appendix A: Answers to Did You Get It? Questions and Multiple Choice Review Questions 603

Appendix B: Word Roots, Prefixes, and Suffixes 610

Appendix C: Periodic Table of the Elements 612

Appendix D: Key Information about Vitamins and Many Essential Minerals 613

Glossary 617

Credits 630

Index 631

1 The Human Body: An Orientation

WHAT

Anatomy is the study of the structure, or physical form, of the body.

HOW

The function, or physiology, of each body part and the body as a whole is dependent on the anatomy of those parts; in other words, structure determines function.

WHY

This text will help you learn structures and functions so you can understand the role of individual organs and body systems and how they interact to support life.

Instructors may assign a related “Building Vocabulary” activity using **Mastering A&P**

1.1 An Overview of Anatomy and Physiology

Learning Objectives

- ✓ Define *anatomy* and *physiology*.
- ✓ Explain how anatomy and physiology are related.

Most of us are naturally curious about our bodies; we want to know what makes us tick. Infants can keep themselves happy for a long time staring at their own hands or pulling their mother’s nose. Older children wonder where food goes when they swallow it, and some believe that they will grow a watermelon in their belly if they swallow the seeds.

Adults become upset when their hearts pound, when they have uncontrollable hot flashes, or when they cannot keep their weight down.

Anatomy and physiology, subdivisions of biology, explore many of these topics as they describe how our bodies are put together and how they work.

1.1a Anatomy

Anatomy (ah-nat’o-me) is the study of the structure and shape of the body and its parts and their relationships to one another. Whenever we each look at our own body or study large body structures such as the heart or bones, we are observing *gross anatomy*; that is, we are studying large, easily observable structures.

Indeed, the term *anatomy*, derived from the Greek words meaning to cut (*tomy*) apart (*ana*), is related most closely to gross anatomical studies because in such studies, preserved animals or their organs are dissected (cut up) to be examined. *Microscopic anatomy*, in contrast, is the study of body structures that are too small to be seen with the naked eye. The cells and tissues of the body can only be seen through a microscope.

1.1b Physiology

Physiology (fiz"e-ol'o-je) is the study of how the body and its parts work or function (*physio* = nature; *ology* = the study of). Like anatomy, physiology has many subdivisions. For example, *neurophysiology* explains the workings of the nervous system, and *cardiac physiology* studies the function of the heart.

1.1c Relationship between Anatomy and Physiology

Anatomy and physiology are always inseparable. The parts of your body form a well-organized unit, and each of those parts has a job to do to make the body operate as a whole. Structure determines what functions can take place. For example, the lungs are not muscular chambers like the heart and so cannot pump blood through the body, but because the walls of their air sacs are very thin, they *can* exchange gases and provide oxygen to the body. We stress the intimate relationship between anatomy and physiology throughout this text to make your learning meaningful.

Did You Get It?

1. Why would you have a hard time learning and understanding physiology if you did not also understand anatomy?
2. Kidney function, bone growth, and beating of the heart are all topics of anatomy. True or false?

For answers, see Appendix A.

CONCEPT LINK

Throughout this text, Concept Links will highlight links between concepts and/or organ systems. Keep in mind that although discussions of the systems are separated into chapters for detailed study, the overall goal of this text is for you not only to gain an understanding of each individual system, but also to learn how the body systems interact to sustain life.

1.2 Levels of Structural Organization

Learning Objectives

- ✓ Name the six levels of structural organization that make up the human body, and explain how they are related.
- ✓ Name the organ systems of the body, and briefly state the major functions of each system.
- ✓ Identify and classify by organ system all organs discussed.

1.2a From Atoms to Organisms

The human body exhibits many levels of structural complexity (**Figure 1.1**). The simplest level of the structural ladder is the *chemical level* (covered in Chapter 2). At this level, **atoms**, tiny building blocks of matter, combine to form *molecules* such as water, sugar, and proteins, like those that make up our muscles. Molecules, in turn, associate in specific ways to form microscopic **cells**, the smallest units of all living things. (We will examine the *cellular level* in Chapter 3.) All cells have some common structures and functions, but individual cells vary widely in size, shape, and their particular roles in the body.

The simplest living creatures are composed of single cells, but in complex organisms such as trees or human beings, the structural ladder continues on to the *tissue level*. **Tissues** consist of groups of similar cells that have a common function. There are four basic tissue types, and each plays a definite but different role in the body. (We discuss tissues in Chapter 3.)

An **organ** is a structure composed of two or more tissue types that performs a specific function for the body. At the *organ level* of organization, extremely complex functions become possible. For example, the small intestine, which digests and absorbs food, is composed of all four tissue types. An **organ system** is a group of organs that work together to accomplish a common purpose. For example, the heart and blood vessels of the cardiovascular system circulate blood continuously to carry nutrients and oxygen to all body cells.

In all, 11 organ systems make up the living human being, or the **organism**, which represents the highest level of structural organization, the *organismal level*. The organismal level is the sum total of all structural levels working together to keep us alive. The

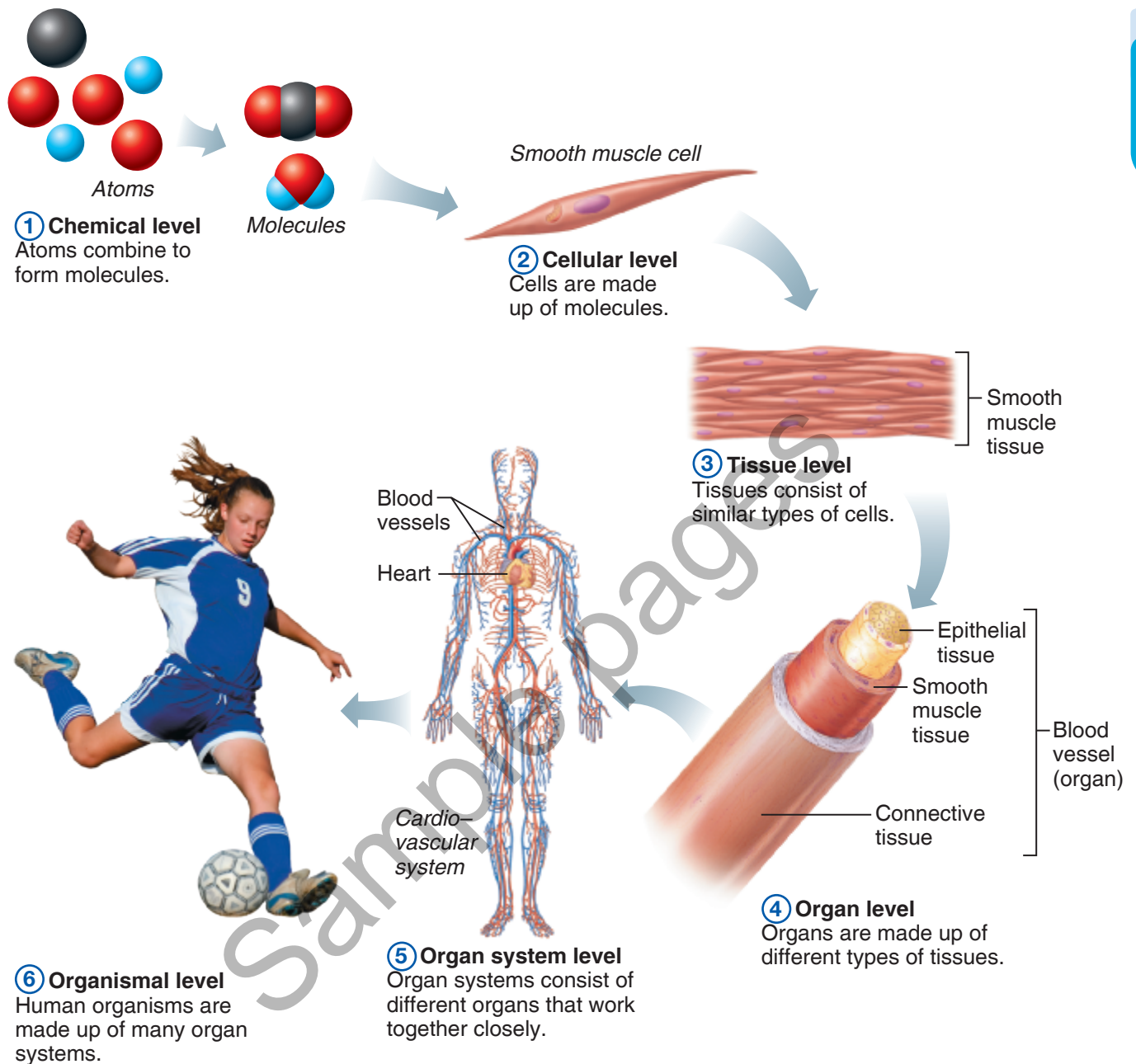


Figure 1.1 Levels of structural organization. In this diagram, components of the cardiovascular system are used to illustrate the levels of structural organization in a human being.

major organs of each system are shown in **Figure 1.2** on pp. 27–28. Refer to the figure as you read through the following descriptions of the organ systems.

1.2b Organ System Overview

Integumentary System

The **integumentary** (in-teg"u-men'tar-e) **system** is the external covering of the body, or the skin, including the hair and fingernails (Figure 1.2a). It waterproofs

the body and cushions and protects the deeper tissues from injury. With the help of sunlight, it produces vitamin D. It also excretes salts in perspiration and helps regulate body temperature. Sensory receptors located in the skin alert us to what is happening at the body surface.

Skeletal System

The **skeletal system** consists of bones, cartilages, and joints (Figure 1.2b). It supports the body and

provides a framework that the skeletal muscles use to cause movement. It also has protective functions (for example, the skull encloses and protects the brain), and the cavities of the skeleton are the sites where blood cells are formed. The hard substance of bones acts as a storehouse for minerals.

Muscular System

The muscles of the body have only one function—to *contract*, or shorten. When this happens, movement occurs. The mobility of the body as a whole reflects the activity of *skeletal muscles*, the large, fleshy muscles attached to bones (Figure 1.2c). When these contract, you are able to stand erect, walk, jump, grasp, throw a ball, or smile. The skeletal muscles form the **muscular system**. These muscles are distinct from the muscles of the heart and of other hollow organs, which move fluids (such as blood or urine) or other substances (such as food) along specific pathways within the body.

Nervous System

The **nervous system** is the body's fast-acting control system. It consists of the brain, spinal cord, nerves, and sensory receptors (Figure 1.2d). The body must be able to respond to stimuli coming from outside the body (such as light, sound, or changes in temperature) and from inside the body (such as decreases in oxygen or stretching of tissue). The *sensory receptors* detect changes in temperature, pressure, or light, and send messages (via electrical signals called *nerve impulses*) to the central nervous system (brain and spinal cord) so that it is constantly informed about what is going on. The central nervous system then assesses this information and responds by activating the appropriate body *effectors* (muscles or glands, which are organs that produce secretions).

Endocrine System

Like the nervous system, the **endocrine** (en'do-krin) **system** controls body activities, but it acts much more slowly. *Endocrine glands* produce chemical molecules called *hormones* and release them into the blood to travel to distant target organs.

The endocrine glands include the pituitary, thyroid, parathyroids, adrenals, thymus, pancreas, pineal, ovaries (in the female), and testes (in the male) (Figure 1.2e). The endocrine glands are not connected anatomically in the same way that the parts of other organ systems are. What they have in common is that they all secrete hormones, which regulate other structures. The body functions

controlled by hormones are many and varied, involving every cell in the body. Growth, reproduction, and the use of nutrients by cells are all controlled (at least in part) by hormones.

Cardiovascular System

The primary organs of the **cardiovascular system** are the heart and blood vessels (Figure 1.2f). Using blood as a carrier, the cardiovascular system delivers oxygen, nutrients, hormones, and other substances to, and picks up wastes such as carbon dioxide from, cells near sites of exchange. White blood cells and chemicals in the blood help to protect the body from such foreign invaders as bacteria, viruses, and tumor cells. The heart propels blood out of its chambers into blood vessels to be transported to all body tissues.

Lymphatic System

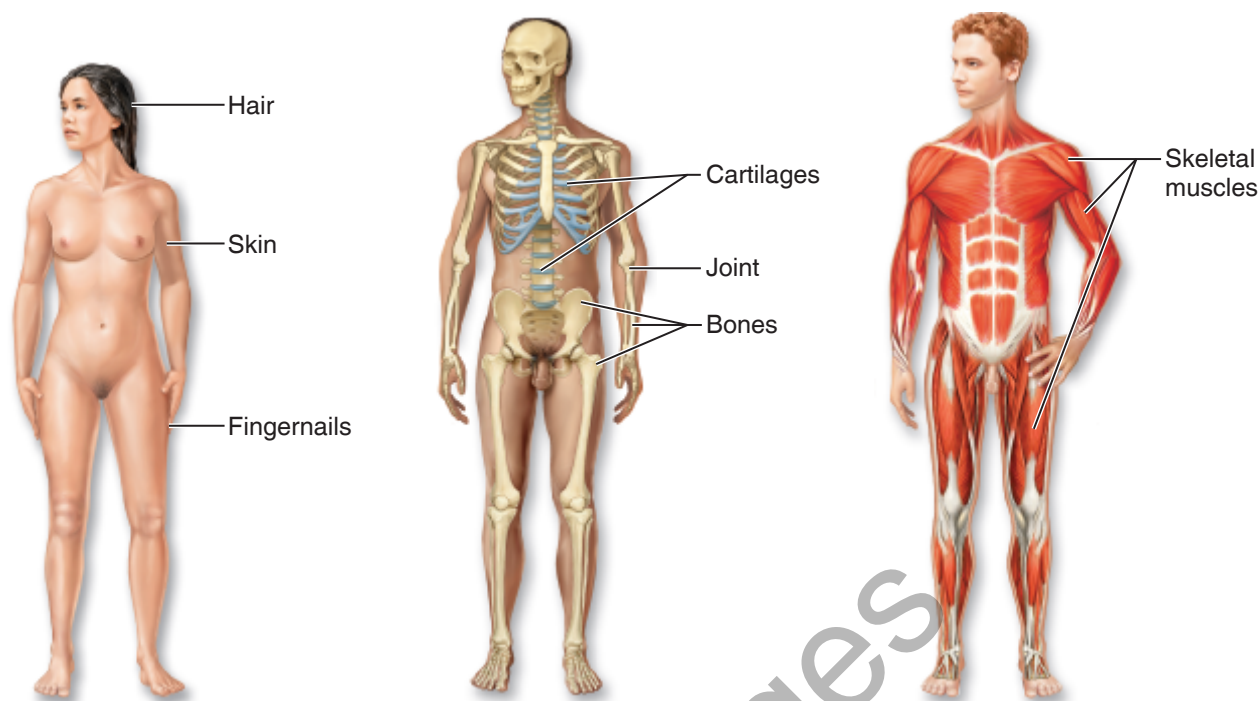
The role of the **lymphatic system** complements that of the cardiovascular system. Its organs include lymphatic vessels, lymph nodes, and other lymphoid organs such as the spleen and tonsils (Figure 1.2g). When fluid is leaked into tissues from the blood, lymphatic vessels return it to the bloodstream so that there is enough blood to continuously circulate through the body. The lymph nodes and other lymphoid organs help to cleanse the blood and house white blood cells involved in immunity.

Respiratory System

The job of the **respiratory system** is to keep the body supplied with oxygen and to remove carbon dioxide. The respiratory system consists of the nasal passages, pharynx, larynx, trachea, bronchi, and lungs (Figure 1.2h). Within the lungs are tiny air sacs, called alveoli. Gases are exchanged with the blood through the thin walls of these alveoli.

Digestive System

The **digestive system** is basically a tube running through the body from mouth to anus. The organs of the digestive system include the oral cavity (mouth), esophagus, stomach, small and large intestines, and rectum plus a number of accessory organs (liver, salivary glands, pancreas, and others) (Figure 1.2i). Their role is to break down food and deliver the resulting nutrients to the blood for dispersal to body cells. The breakdown activities that begin in the mouth are completed in the small intestine. From that point on, the major function of the digestive system is to absorb nutrients and reabsorb water. The



(a) Integumentary System

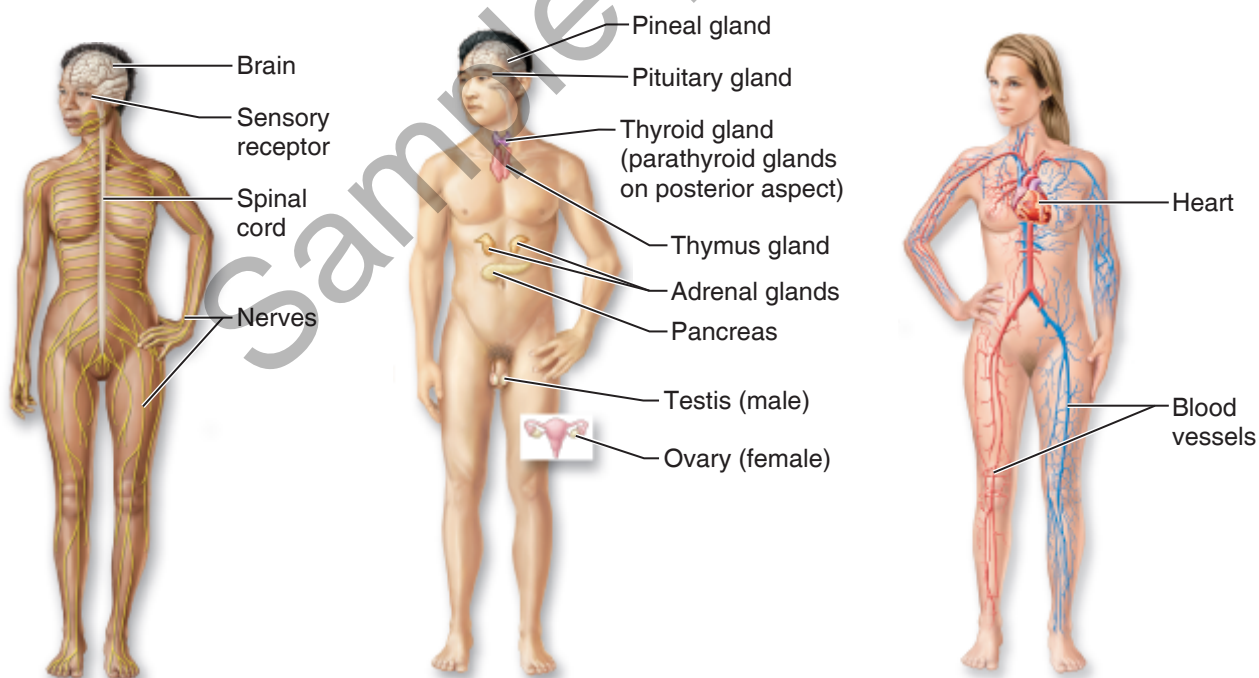
Forms the external body covering; protects deeper tissue from injury; synthesizes vitamin D; location of sensory receptors (pain, pressure, etc.) and sweat and oil glands.

(b) Skeletal System

Protects and supports body organs; provides a framework the muscles use to cause movement; blood cells are formed within bones; stores minerals.

(c) Muscular System

Allows manipulation of the environment, locomotion, and facial expression; maintains posture; produces heat.



(d) Nervous System

Fast-acting control system of the body; responds to internal and external changes by activating appropriate muscles and glands.

(e) Endocrine System

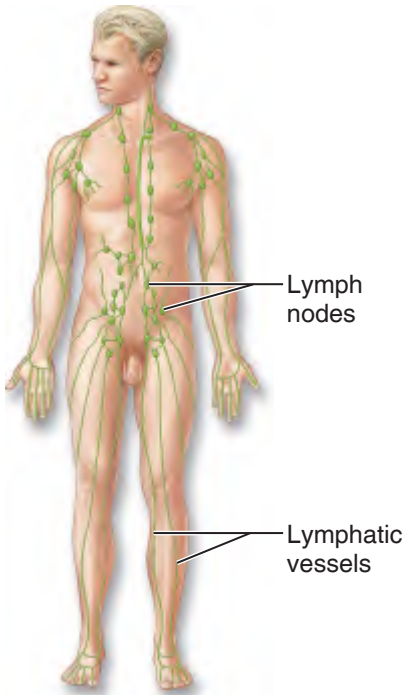
Glands secrete hormones that regulate processes such as growth, reproduction, and nutrient use by body cells.

(f) Cardiovascular System

Blood vessels transport blood, which carries oxygen, nutrients, hormones, carbon dioxide, wastes, etc.; the heart pumps blood.

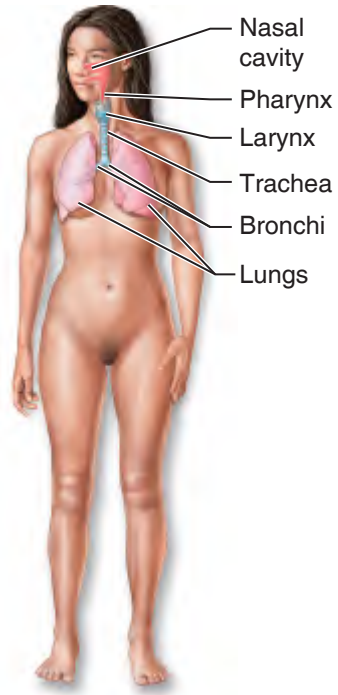
Figure 1.2 The body's organ systems.

(Figure continues on page 28.)



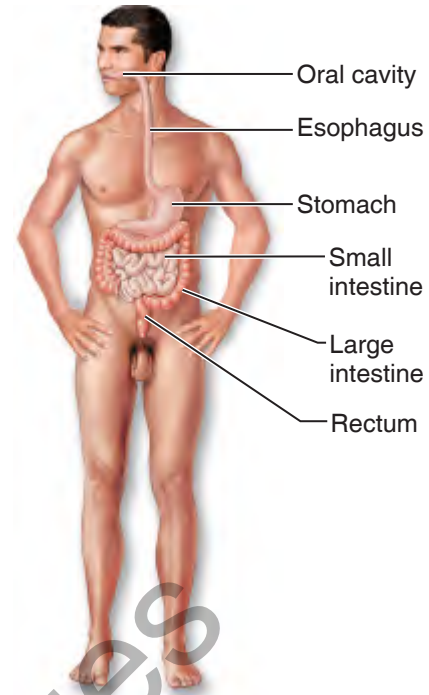
(g) Lymphatic System

Picks up fluid leaked from blood vessels and returns it to blood; disposes of debris in the lymphatic stream; houses white blood cells involved in immunity.



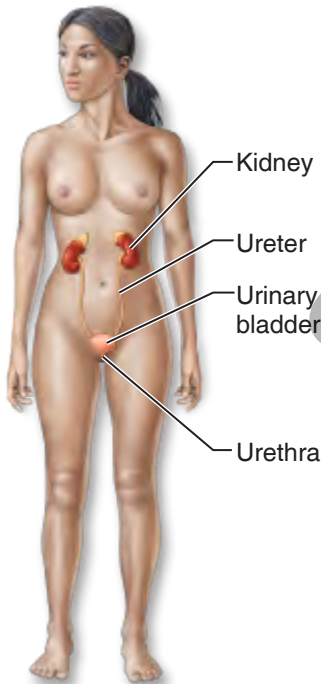
(h) Respiratory System

Keeps blood constantly supplied with oxygen and removes carbon dioxide; gas exchange occurs through the walls of the air sacs of the lungs.



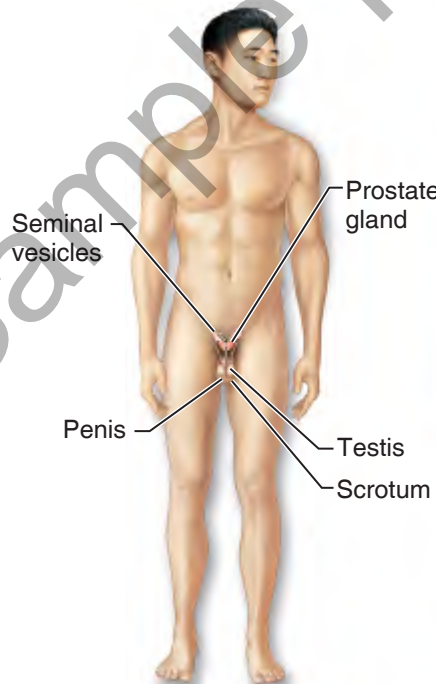
(i) Digestive System

Breaks food down into absorbable nutrients that enter the blood for distribution to body cells; indigestible foodstuffs are eliminated as feces.

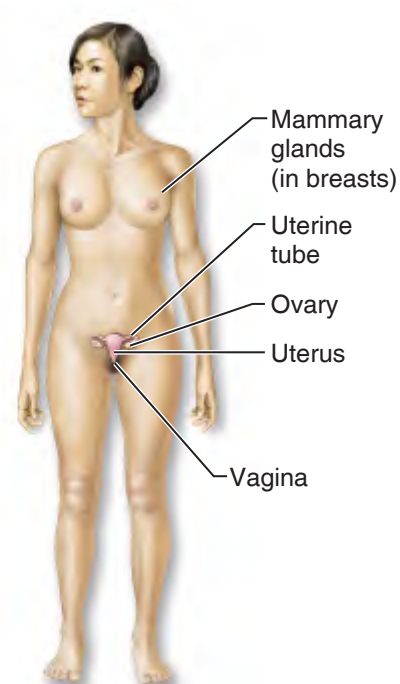


(j) Urinary System

Eliminates nitrogen-containing wastes from the body; regulates water, electrolyte, and acid-base balance of the blood.



(k) Male Reproductive System



(l) Female Reproductive System

Overall function of the reproductive system is production of offspring. Testes produce sperm and male sex hormone; ducts and glands aid in delivery of viable sperm to the female reproductive tract. Ovaries produce eggs and female sex hormones; remaining structures serve as sites for fertilization and development of the fetus. Mammary glands of female breasts produce milk to nourish the newborn.

Figure 1.2 (continued) The body's organ systems.

undigested food that remains in the tract leaves the body through the anus as feces. The liver is considered a digestive organ because the bile it produces helps to break down fats. The pancreas, which delivers digestive enzymes to the small intestine, has both endocrine and digestive functions.

Urinary System

A normal part of healthy body function is the production of waste by-products, which must be disposed of. One type of waste contains nitrogen (examples are urea and uric acid), which results when the body cells break down proteins and nucleic acids, which are genetic information molecules. The **urinary system** removes the nitrogen-containing wastes from the blood and flushes them from the body in *urine*. This system, often called the *excretory system*, is composed of the kidneys, ureters, bladder, and urethra (Figure 1.2j). Other important functions of this system include maintaining the body's water and salt (electrolyte) balance, regulating the acid-base balance of the blood, and helping to regulate normal blood pressure.

Reproductive System

The role of the **reproductive system** is to produce offspring. The male testes produce sperm. Other male reproductive system structures are the scrotum, penis, accessory glands, and the duct system, which carries sperm to the outside of the body (Figure 1.2k). The female ovaries produce eggs, or ova; the female duct system consists of the uterine tubes, uterus, and vagina (Figure 1.2l). The uterus provides the site for the development of the fetus (immature infant) once fertilization has occurred.

Did You Get It?

- At which level of structural organization is the stomach? At which level is a glucose molecule?
- Which organ system includes the trachea, lungs, nasal cavity, and bronchi?
- Which system functions to remove wastes and help regulate blood pressure?

For answers, see Appendix A.

1.3 Maintaining Life

Learning Objectives

- List eight functions that humans must perform to maintain life.
- List the five survival needs of the human body.

1.3a Necessary Life Functions

Now that we have introduced the structural levels composing the human body, a question naturally follows: What does this highly organized human body do? Like all complex animals, human beings maintain their boundaries, move, respond to environmental changes, take in and digest nutrients, carry out metabolism, dispose of wastes, reproduce themselves, and grow.

Organ systems do not work in isolation; instead, they work together to promote the well-being of the entire body (Figure 1.3, p. 30). Because this theme is emphasized throughout this text, it is worthwhile to identify the most important organ systems contributing to each of the necessary life functions. Also, as you study this figure, you may want to refer to the more detailed descriptions of the organ systems just provided (pp. 26–29 and in Figure 1.2).

Maintaining Boundaries

Every living organism must be able to maintain its boundaries so that its “inside” remains distinct from its “outside.” Every cell of the human body is surrounded by an external membrane that separates its contents from the outside interstitial fluid (fluid between cells) and allows entry of needed substances while generally preventing entry of potentially damaging or unnecessary substances. The body as a whole is also enclosed by the integumentary system, or skin. The integumentary system protects internal organs from drying out (which would be fatal), from pathogens, and from the damaging effects of heat, sunlight, and an unbelievable number of chemical substances in the external environment.

Movement

Movement includes all the activities promoted by the muscular system, such as propelling ourselves from one place to another (by walking, swimming, and so forth) and manipulating the external environment with our fingers. The skeletal system provides the bones that the muscles pull on as they work. Movement also occurs when substances such as blood, foodstuffs, air, and urine are propelled through the internal organs of the cardiovascular, digestive, respiratory, and urinary systems, respectively.

Responsiveness

Responsiveness, or **irritability**, is the ability to sense changes (stimuli) in the environment and then to react to them. For example, if you accidentally

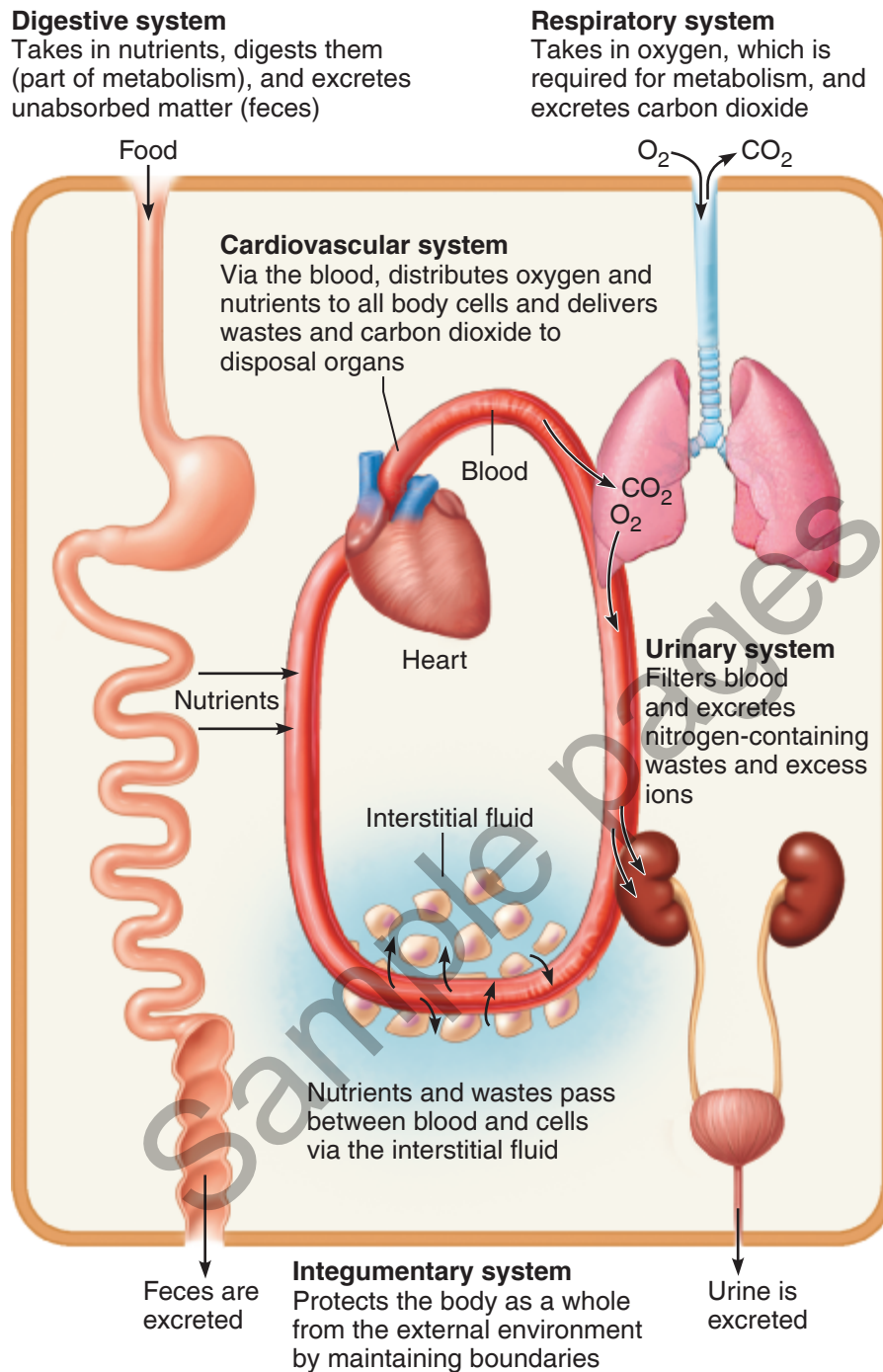


Figure 1.3 Examples of interrelationships among organ systems that illustrate life functions.

touch a hot pan, you involuntarily pull your hand away from the painful stimulus (the pan). You do not need to think about it—it just happens! Likewise, when the amount of carbon dioxide in your blood rises to a dangerously high level, your breathing rate speeds up to blow off the excess carbon dioxide.

Because nerve cells are highly irritable and can communicate rapidly with each other via electrical

impulses, the nervous system bears the major responsibility for responsiveness. However, all body cells are responsive to some extent.

Digestion

Digestion is the process of breaking down ingested food into simple molecules that can then be absorbed into the blood. The nutrient-rich blood is

then distributed to all body cells by the cardiovascular system, where body cells use these simple molecules for energy and raw materials.

Metabolism

Metabolism is a broad term that refers to all chemical reactions that occur within the body and all of its cells. It includes breaking down complex substances into simpler building blocks (as in digestion), making larger structures from smaller ones, and using nutrients and oxygen to produce molecules of *adenosine triphosphate (ATP)*, the energy-rich molecules that power cellular activities. Metabolism depends on the digestive and respiratory systems to make nutrients and oxygen available to the blood and on the cardiovascular system to distribute these needed substances throughout the body. Metabolism is regulated chiefly by hormones secreted by the glands of the endocrine system.

Excretion

Excretion is the process of removing *excreta* (ek-skre'tah), or wastes, from the body. Several organ systems participate in excretion. For example, the digestive system rids the body of indigestible food residues in feces, the urinary system disposes of nitrogen-containing metabolic wastes in urine, and the skin disposes of various waste products as components of sweat.

Reproduction

Reproduction, the production of offspring, can occur on the cellular or organismal level. In cellular reproduction, the original cell divides, producing two identical daughter cells that may then be used for body growth or repair. Reproduction of the human organism is the task of the organs of the reproductive system, which produce sperm and eggs. When a sperm unites with an egg, a fertilized egg forms, which then develops into a baby within the mother's body. The function of the reproductive system is regulated very precisely by hormones of the endocrine system.

Growth

Growth can be an increase in cell size or an increase in body size that is usually accomplished by an increase in the number of cells. For growth to occur, cell-constructing activities must occur at a faster rate than cell-destroying ones. Hormones released by the endocrine system play a major role in directing growth.

1.3b Survival Needs

The goal of nearly all body systems is to maintain life. However, life is extraordinarily fragile and requires that several factors be available. These factors, which we will call *survival needs*, include nutrients (food), oxygen, water, and appropriate temperature and atmospheric pressure.

Nutrients, which the body takes in through food, contain the chemicals used for energy and cell building. *Carbohydrates* are the major energy-providing fuel for body cells. *Proteins* and, to a lesser extent, *fats* are essential for building cell structures. Fats also cushion body organs and provide reserve fuel. *Minerals* and *vitamins* are required for the chemical reactions that go on in cells and for oxygen transport in the blood.

All the nutrients in the world are useless unless **oxygen** is also available. Because the chemical reactions that release energy from foods require oxygen, human cells can survive for only a few minutes without it. It is made available to the blood and body cells by the cooperative efforts of the respiratory and cardiovascular systems.

Water accounts for 60 to 80 percent of body weight, depending on the age of the individual. It is the single most abundant chemical substance in the body and provides the fluid base for body secretions and excretions. We obtain water chiefly from ingested foods or liquids, and we lose it by evaporation from the lungs and skin and in body excretions.

If chemical reactions are to continue at life-sustaining levels, **normal body temperature** must be maintained. If body temperature drops below 37°C (98.6°F), metabolic reactions become slower and slower and finally stop. If body temperature is too high, chemical reactions proceed too rapidly, and body proteins begin to break down. At either extreme, death occurs. Most body heat is generated by the activity of the skeletal muscles and dissipated via blood circulating close to the skin surface or by the evaporation of sweat.

The force exerted on the surface of the body by the weight of air is referred to as **atmospheric pressure**. Breathing and the exchange of oxygen and carbon dioxide in the lungs depend on appropriate atmospheric pressure. At high altitudes, where the air is thin and atmospheric pressure is lower, gas exchange may be too slow to support cellular metabolism.

Medical Imaging: Illuminating the Body

Imaging procedures are important diagnostic tools that are either minimally invasive or not invasive at all. By bombarding the body with different forms of energy, medical imaging techniques can reveal the structure of internal organs, show blood flow in real time, and even determine the density of bone.

Until about 60 years ago, the magical but murky X-ray was the only means of peering into a living body without performing surgery.

Two examples of low-dose X-ray procedures are mammography and bone densitometry. A **mammogram** is used to identify changes in breast tissue, including dense masses or calcifications; see photo (a). **Bone densitometry** detects the amount of calcium and minerals stored in bone and is the major diagnostic test for osteoporosis.

The 1950s saw the birth of **ultrasound imaging (ultrasonography)**,

which has some distinct advantages over other imaging techniques. The equipment employs high-frequency sound waves (ultrasound) as its energy source. The body is probed with pulses of sound waves, which cause echoes when reflected and scattered by body tissues. The echoes are analyzed by computer to construct visual images of body organs, much like sonar is used to map the ocean floor. Even though ultrasound is the safest imaging technique available, health care providers should limit patients' exposure to the lowest level that will be effective. The long-term effects of ultrasound exposure are not known.

Perhaps the best known of these newer imaging devices is **computed tomography (CT)**, a refined version of X-ray that eliminates the confusion resulting from images of overlapping structures. A CT scanner takes "pictures" of a thin slice of the body. Different tissues absorb the radiation in

varying amounts. The device's computer translates this information into a detailed image of the body region scanned; see photo (b). CT scans are at the forefront in evaluating most problems that affect the brain and abdomen, and their clarity has all but eliminated exploratory surgery. Special ultrafast CT scanners have produced a technique called **dynamic spatial reconstruction (DSR)**, which provides three-dimensional images of body organs from any angle. It also allows organ movements and changes in internal volumes to be observed at normal speed, in slow motion, and at a specific moment in time. The greatest value of DSR has been to visualize the heart beating and blood flowing through blood vessels.

Positron emission tomography (PET) requires an injection of short-lived radioisotopes that have been tagged to biological molecules (such as glucose) in order to view metabolic

The mere presence of these survival factors is not sufficient to maintain life. They must be present in appropriate amounts as well; excesses and deficits may be equally harmful. For example, the food ingested must be of high quality and in proper amounts; otherwise, nutritional disease, obesity, or starvation is likely.

Did You Get It?

- In addition to being able to metabolize, grow, digest food, and excrete wastes, what other functions must an organism perform if it is to survive?
- Oxygen is a survival need. Why is it so important? In which life function does oxygen participate directly?

For answers, see Appendix A.

1.4 The Language of Anatomy

Learning Objectives

- ✓ Verbally describe or demonstrate the anatomical position.
- ✓ Use proper anatomical terminology to describe body directions, surfaces, and body planes.
- ✓ Locate the major body cavities, and list the chief organs in each cavity.

Learning about the body is exciting, but it can be difficult to maintain our interest when we are faced with all the new terminology of anatomy and physiology. Let's face it: You can't just pick up an anatomy and physiology book and read it as if it were a novel. Unfortunately, confusion is inevitable without specialized terminology. For example, if you are looking at a ball, "above" always means the area over the top of the ball. Other directional terms can also be used consistently because the ball is a sphere. All

processes. As the radioisotopes are absorbed by the most active brain cells, high-energy gamma rays are produced, which a computer then analyzes to generate a picture of the brain's biochemical activity in vivid colors. PET's greatest clinical value has been its ability to provide insights into brain activity in real time, particularly in people affected by mental illness, Alzheimer's disease, and epilepsy.

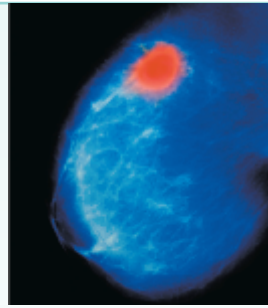
A different technique is **magnetic resonance imaging (MRI)**, which uses magnetic fields up to 60,000 times stronger than Earth's to pry information from

body tissues. Hydrogen molecules spin like tops in the magnetic field, and their energy is enhanced by the pres-

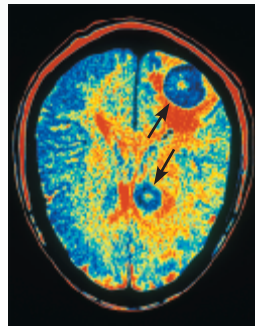
ence of radio waves. When the radio waves are turned off, energy is released and translated by a computer into a visual image (see Figure 1.5, p. 37). MRI is immensely popular because it can do many things a CT scan cannot. Dense structures do not show up in MRI, so bones of the skull and/or vertebral column do not impair the view of *soft tissues*, such as the brain or intervertebral discs, the cartilage pads between vertebrae.

A variation of MRI called **functional magnetic resonance imaging (fMRI)** allows tracking of blood flow into the brain in real

isotopes, fMRI provides a less invasive alternative. Despite its advantages, the powerful magnets of the MRI can pose risks. For example, metal objects, such as implanted pacemakers and loose tooth fillings, can be "sucked" through the body. Also, the long-term health risks of exposure to strong magnetic fields are not clear.



(a) Mammogram showing breast cancer.



(b) CT scan showing brain tumors (indicated by black arrows).

The Essentials

- Medical imaging procedures are minimally invasive or noninvasive.
- The most common imaging techniques include X-ray, CT, MRI, and ultrasound.
- All of these except ultrasound expose patients to ionizing radiation in some form.
- Modern imaging techniques use computer software to build and manipulate three-dimensional images for better visualization of body structures and irregularities.

sides and surfaces are equal. The human body, of course, has many protrusions and bends. Thus, the question becomes: Above what? To prevent misunderstanding, anatomists use a set of terms that allow body structures to be located and identified clearly with just a few words. We present and explain this language of anatomy next.

1.4a Anatomical Position

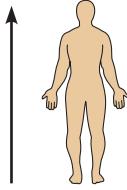
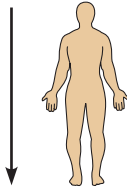
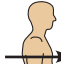
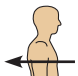
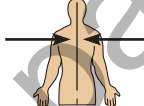
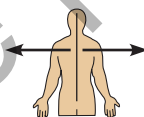

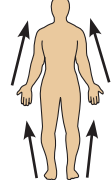
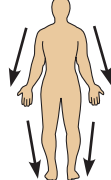


To accurately describe body parts and position, we must have an initial reference point and use directional terms. To avoid confusion, we always assume that the body is in a standard position called **anatomical position**. It is important to understand this position because most body terminology used in this text refers to this body positioning *regardless* of the position the body happens to be in. In anatomical position, the body is erect with the feet parallel and the arms hanging at the sides with the palms facing forward. Stand up now, and

assume the anatomical position. Notice that it is similar to "standing at attention" but is less comfortable because the palms are held unnaturally forward (with thumbs pointing away from the body) rather than hanging cupped toward the thighs.

1.4b Directional Terms

Directional terms allow medical personnel and anatomists to explain exactly where one body structure is in relation to another. For example, we can describe the relationship between the ears and the nose informally by saying, "The ears are located on each side of the head to the right and left of the nose." In anatomical terminology, this condenses to, "The ears are lateral to the nose." Using anatomical terminology saves words and, once learned, is much clearer. Commonly used directional terms are defined and illustrated in **Table 1.1**. Although many of these terms are also used in everyday conversation, keep in mind that their anatomical meanings are very precise.

Table 1.1 Orientation and Directional Terms

Term	Definition	Illustration	Example
Superior (cranial or cephalic)	Toward the head end or upper part of a structure or the body; above		The forehead is superior to the nose.
Inferior (caudal)*	Away from the head end or toward the lower part of a structure or the body; below		The navel is inferior to the breastbone.
Anterior (ventral)†	Toward or at the front of the body; in front of		The breastbone is anterior to the spine.
Posterior (dorsal)†	Toward or at the backside of the body; behind		The heart is posterior to the breastbone.
Medial	Toward or at the midline of the body; on the inner side of		The heart is medial to the arm.
Lateral	Away from the midline of the body; on the outer side of		The arms are lateral to the chest.
Intermediate	Between a more medial and a more lateral structure		The collarbone is intermediate between the breastbone and the shoulder.
Proximal	Close to the origin of the body part or the point of attachment of a limb to the body trunk		The elbow is proximal to the wrist (meaning that the elbow is closer to the shoulder or attachment point of the arm than the wrist is).
Distal	Farther from the origin of a body part or the point of attachment of a limb to the body trunk		The knee is distal to the thigh.
Superficial (external)	Toward or at the body surface		The skin is superficial to the skeleton.
Deep (internal)	Away from the body surface; more internal		The lungs are deep to the rib cage.

*The term caudal, literally "toward the tail," is synonymous with inferior only to the inferior end of the spine.

†Anterior and ventral are synonymous in humans, but not in four-legged animals. Ventral refers to an animal's "belly," making it the inferior surface. Likewise, posterior and dorsal surfaces are the same in humans, but dorsal refers to an animal's back, making it the superior surface.



Study this figure for a moment to answer these two questions. Where would you hurt if you (1) pulled a groin muscle or (2) cracked a bone in your olecranal area?

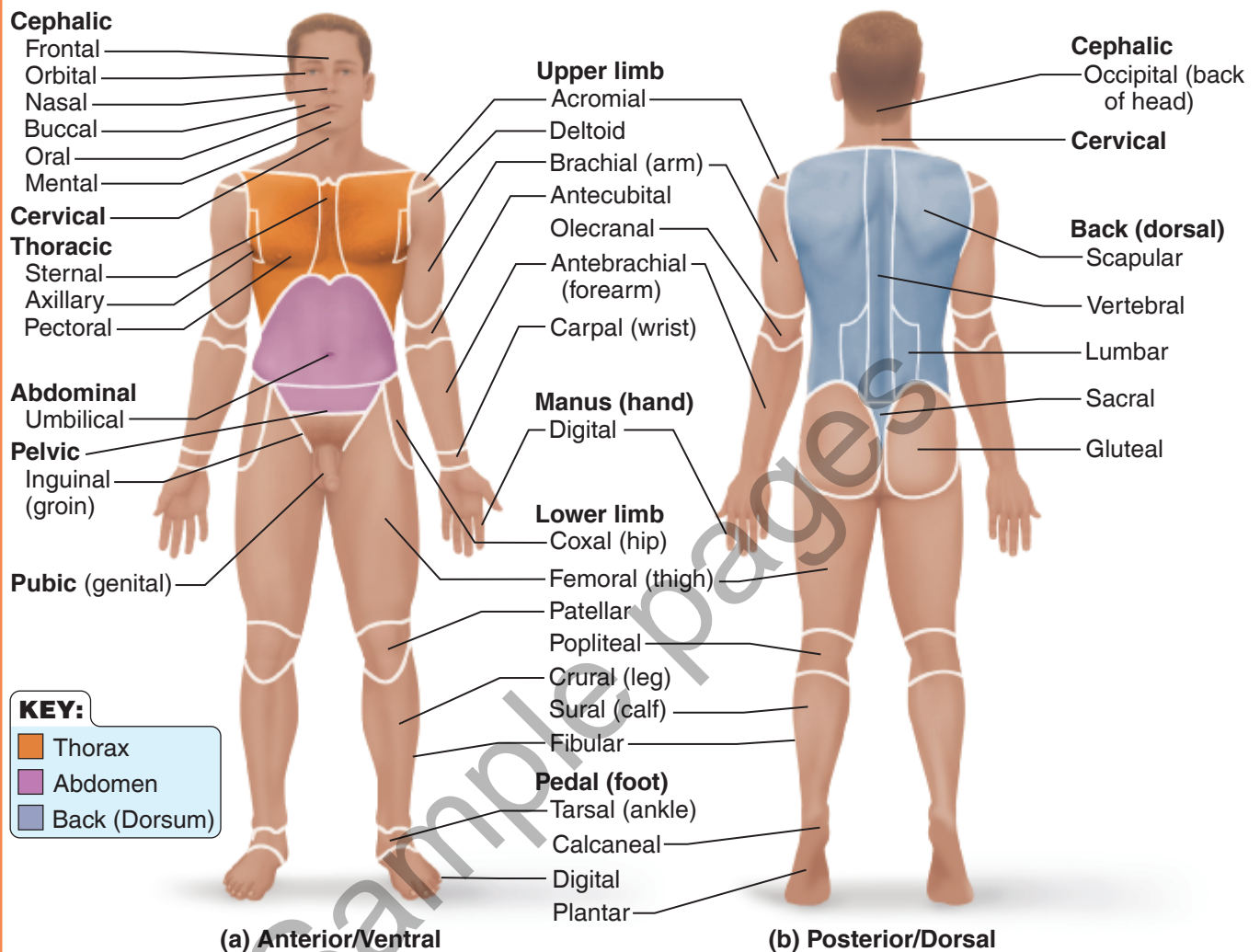


Figure 1.4 The anatomical position and regional terms. This figure shows terms used to designate specific body areas. **(a)** Anterior view. **(b)** Posterior view. The heels are raised slightly to show the inferior plantar surface (sole) of the foot, which is actually on the inferior surface of the body.

Before continuing, check your understanding of what you have read in the table. Complete each of the following statements with the correct anatomical term.

The wrist is _____ to the hand.

The breastbone is _____ to the spine.

The brain is _____ to the spinal cord.

The thumb is _____ to the fingers. (Be careful here. Remember the anatomical position.)

1.4c Regional Terms

There are many visible landmarks on the surface of the body. Once you know their proper anatomical names, you can be specific in referring to different regions of the body.

Anterior Body Landmarks

Look at **Figure 1.4a** to find the following body regions. Once you have identified all the anterior body landmarks, cover the labels that describe what



(1) Your posterior inguinal region. (2) Your posterior elbow region.

the structures are. Then go through the list again, pointing out these areas on your own body.

- **abdominal** (ab-dom'ĩ-nal): anterior body trunk inferior to ribs
- **acromial** (ah-kro'me-ul): point of shoulder
- **antebrachial** (an'te-bra'ke-al): forearm
- **antecubital** (an'te-ku'bĩ-tal): anterior surface of elbow
- **axillary** (ak'sĩ-lar'e): armpit
- **brachial** (bra'ke-al): arm
- **buccal** (buk'al): cheek area
- **carpal** (kar'pal): wrist
- **cervical** (ser'vĩ-kal): neck region
- **coxal** (kok'sal): hip
- **crural** (kroo'ral): anterior leg; the shin
- **deltoid** (del'toyd): curve of shoulder formed by large deltoid muscle
- **digital** (dij'ĩ-tal): fingers, toes
- **femoral** (fem'or-al): thigh (applies to both anterior and posterior)
- **fibular** (fib'u-lar): lateral part of leg
- **frontal** (frun'tal): forehead
- **inguinal** (in'gwĩ-nal): area where thigh meets body trunk; groin
- **mental** (men'tul): chin
- **nasal** (na'zul): nose area
- **oral** (o'ral): mouth
- **orbital** (or'bĩ-tal): eye area
- **patellar** (pah-tel'er): anterior knee
- **pectoral** (pek'to-ral): relating to, or occurring in or on, the chest
- **pelvic** (pel'vik): area overlying the pelvis anteriorly
- **pubic** (pyu'bik): genital region
- **sternal** (ster'nul): breastbone area
- **tarsal** (tar'sal): ankle region
- **thoracic** (tho-ras'ik): area between the neck and abdomen, supported by the ribs, sternum and costal cartilages; chest
- **umbilical** (um-bil'ĩ-kal): navel

Posterior Body Landmarks

Identify the following body regions in Figure 1.4b, and then locate them on yourself without referring to this text.

- **calcaneal** (kal-ka'ne-ul): heel of foot
- **cephalic** (seh-fã'lik): head
- **femoral** (fem'or-al): thigh
- **gluteal** (gloo'te-al): buttock
- **lumbar** (lum'bar): area of back between ribs and hips; the loin
- **occipital** (ok-sip'ĩ-tal): posterior surface of head or base of skull
- **olecranal** (ol-eh-kra'nel): posterior surface of elbow
- **popliteal** (pop-lit'e-al): posterior knee area
- **sacral** (sa'krul): area between hips at base of spine
- **scapular** (skap'u-lar): shoulder blade region
- **sural** (soo'ral): the posterior surface of leg; the calf
- **vertebral** (ver'tẽ-bral): area of spinal column

The **plantar** region, or the sole of the foot, actually on the inferior body surface, is illustrated with the posterior body landmarks (see Figure 1.4b).

Did You Get It?

8. What is the anatomical position, and why is it important that an anatomy student understand it?
9. The axillary and the acromial areas are both in the general area of the shoulder. To what specific body area does each of these terms apply?
10. Use anatomical language to describe the location of a cut to the back of your left forearm.

For answers, see Appendix A.

1.4d Body Planes and Sections

When preparing to look at the internal structures of the body, medical students make a **section**, or cut. When the section is made through the body wall or through an organ, it is made along an imaginary line called a **plane**. Because the body is three-dimensional, we can refer to three types of planes or sections that lie at right angles to one another (**Figure 1.5**).

Q

Which section type would separate the two eyes?



(a) Median (midsagittal)



(b) Frontal (coronal) plane



(c) Transverse plane

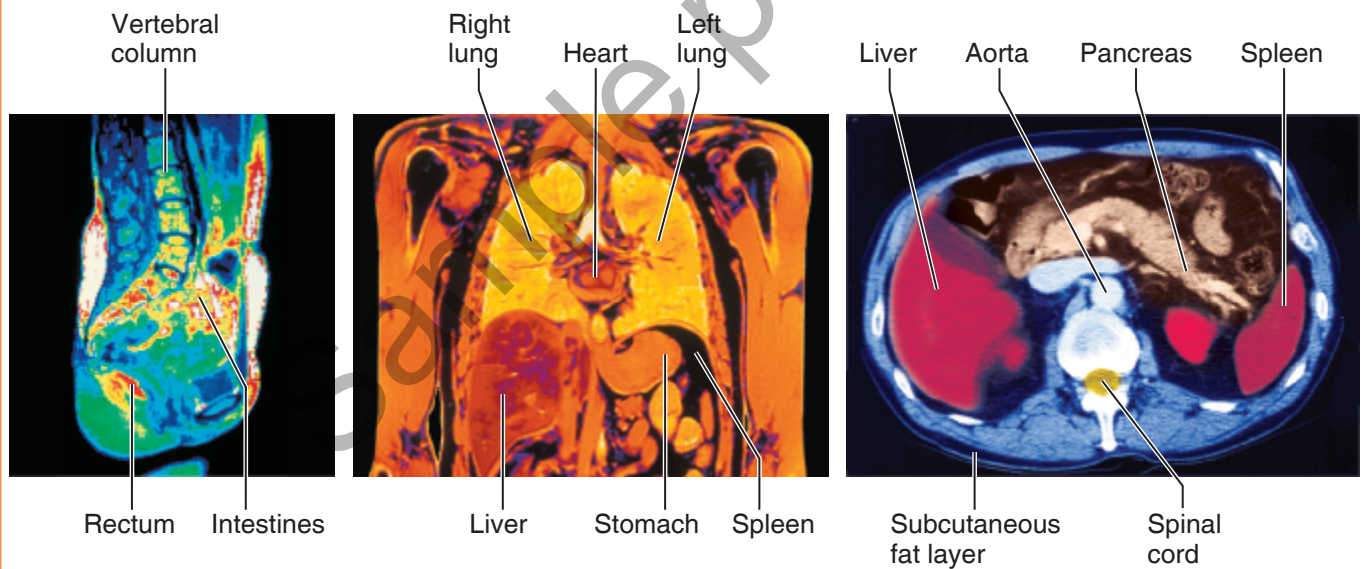


Figure 1.5 The planes of the body—median, frontal, and transverse—with corresponding MRI scans. Note that the planes are shown on a body in anatomical position.

A **sagittal** (saj'ĩ-tal) **section** is a cut along the lengthwise, or longitudinal, plane of the body, dividing the body into right and left parts. If the cut is

down the median plane of the body and the right and left parts are equal in size, it is called a **median (midsagittal) section**. All other sagittal sections are parasagittal sections (*para* = near).

A

A midsagittal section would separate the two eyes.

A **frontal section** is a cut along a lengthwise plane that divides the body (or an organ) into anterior and posterior parts. It is also called a **coronal** (ko-ro'nal, "crown") **section**.

A **transverse section** is a cut along a horizontal plane, dividing the body or organ into superior and inferior parts. It is also called a **cross section**.

Sectioning a body or one of its organs along different planes often results in very different views. For example, a transverse section of the body trunk at the level of the kidneys would show kidney structure in cross section very nicely; a frontal section of the body trunk would show a different view of kidney anatomy; and a midsagittal section would miss the kidneys completely. Information on body organ positioning can be gained by taking magnetic resonance imaging (MRI) scans along different body planes (see Figure 1.5). MRI scans are described further in "A Closer Look" (pp. 32–33).

1.4e Body Cavities

Anatomy and physiology textbooks typically describe two sets of internal body cavities, called the *dorsal* and *ventral body cavities*, that provide different degrees of protection to the organs within them (Figure 1.6). Because these cavities differ in their mode of embryological development and in their lining membranes, many anatomy reference books do not identify the dorsal, or neural, body cavity as an internal body cavity. However, the idea of two major sets of internal body cavities is a useful learning concept, so we will continue to use it here.

Dorsal Body Cavity

The **dorsal body cavity** has two subdivisions, which are continuous with each other. The **cranial cavity** is the space inside the bony skull. The brain is well protected because it occupies the cranial cavity. The **spinal cavity** extends from the cranial cavity to the end of the spinal cord. The spinal cord, which is a continuation of the brain, is protected by the bony vertebrae, which surround the spinal cavity and form the spine.

Ventral Body Cavity

The **ventral body cavity** is much larger than the dorsal cavity. It contains all the structures within the chest and abdomen, that is, the organs in those regions. Like the dorsal cavity, the ventral body cavity is subdivided. The superior **thoracic cavity** is separated from the rest of the ventral cavity by a

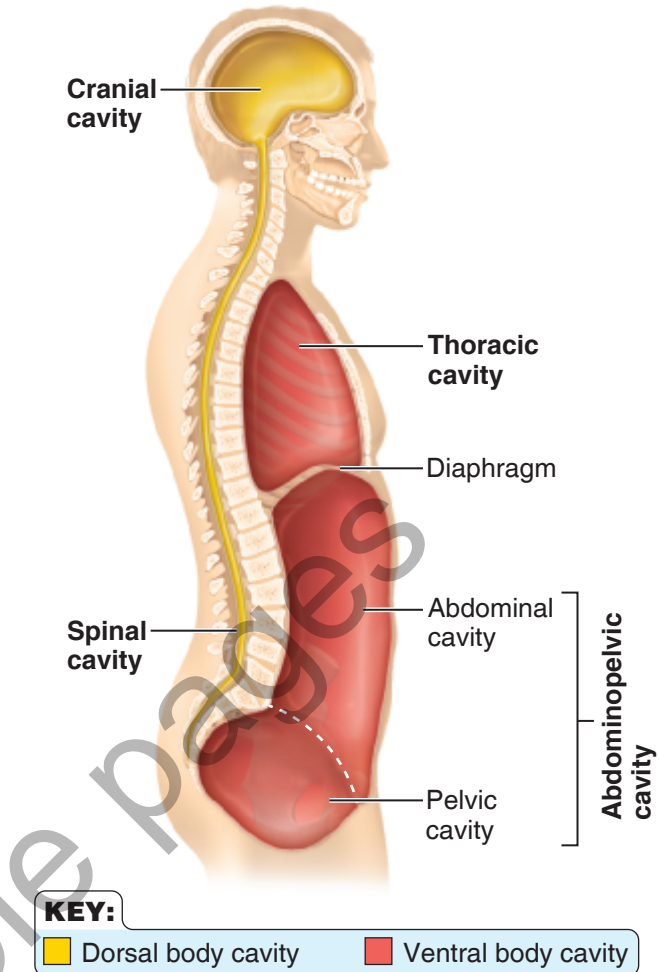


Figure 1.6 Body cavities. Notice the angular relationship between the abdominal and pelvic cavities.

dome-shaped muscle, the **diaphragm** (di'ah-fram). The organs in the thoracic cavity (lungs, heart, and others) are protected by the rib cage. A central region called the **mediastinum** (me'de-as-ti'num) separates the lungs into right and left cavities in the thoracic cavity. The mediastinum itself houses the heart, trachea, and several other visceral organs.

The cavity inferior to the diaphragm is the **abdominopelvic** (ab-dom'i-no-pel'vik) **cavity**. Some prefer to subdivide it into a superior **abdominal cavity** containing the stomach, liver, intestines, and other organs, and an inferior **pelvic cavity** containing the reproductive organs, bladder, and rectum. However, there is no actual physical structure dividing the abdominopelvic cavity. The pelvic cavity is not immediately inferior to the abdominal cavity, but rather tips away from the abdominal cavity in the posterior direction (see Figure 1.6).

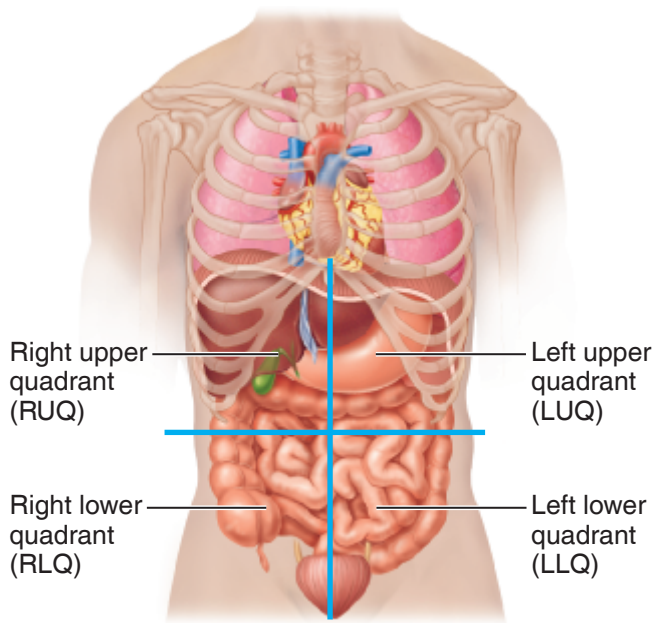


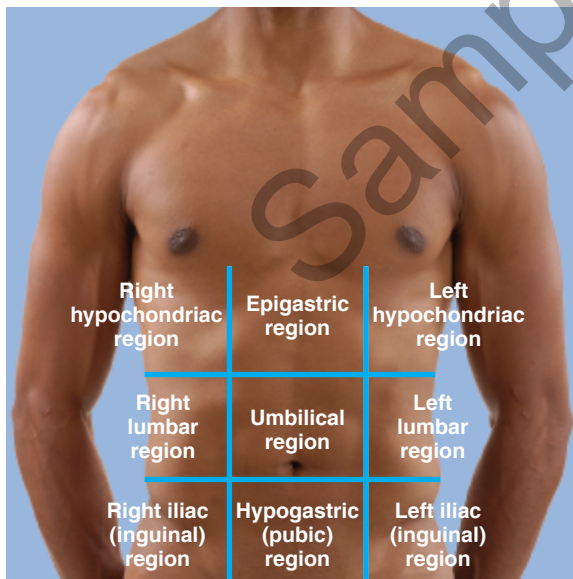
Figure 1.7 The four abdominopelvic quadrants. In this scheme used by medical personnel, the abdominopelvic cavity is divided into four quadrants by two planes.

When the body is subjected to physical trauma (as often happens in an automobile accident, for example), the most vulnerable abdominopelvic organs are those within the abdominal cavity. The reason is that the abdominal cavity walls are formed only of trunk muscles and are not reinforced by bone. The pelvic organs receive some protection from the bony pelvis in which they reside.

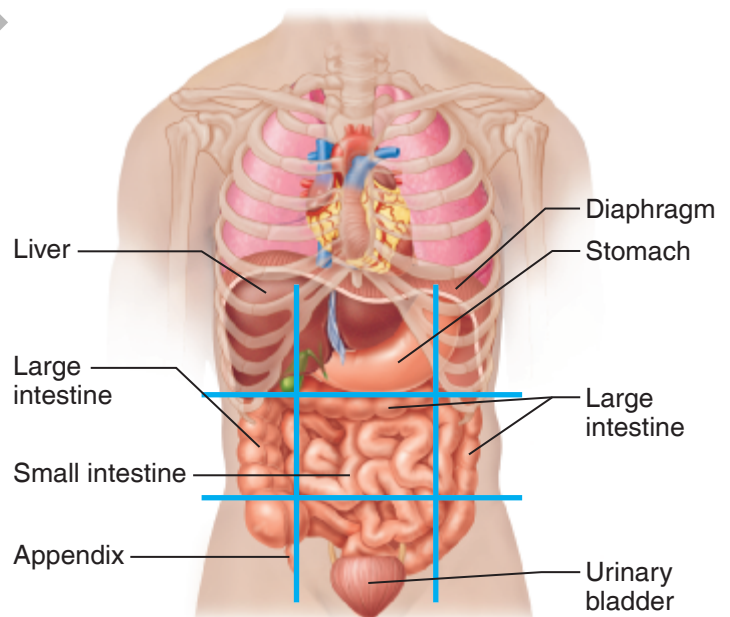
Because the abdominopelvic cavity is quite large and contains many organs, it helps to divide it up into smaller areas for study. A scheme commonly used by medical personnel divides the abdominopelvic cavity into four more or less equal regions called *quadrants*. The quadrants are named according to their relative locations with respect to anatomical position—that is, right upper quadrant (RUQ), right lower quadrant (RLQ), left upper quadrant (LUQ), and left lower quadrant (LLQ) (**Figure 1.7**).

Another system, used mainly by anatomists, divides the abdominopelvic cavity into nine separate *regions* by four planes (**Figure 1.8a**). As you locate these regions, notice the organs they contain (Figure 1.8b).

- The **umbilical region** is the centermost region, deep to and surrounding the umbilicus (navel).



(a) Nine regions delineated by four planes



(b) Anterior view of the nine regions showing the superficial organs

Figure 1.8 The nine abdominopelvic regions. The abdominopelvic cavity is divided into nine regions by four planes in this

scheme used mostly by anatomists. In (a), the superior transverse plane is just superior to the ribs; the inferior transverse plane is just superior to

the hip bones; and the parasagittal planes lie just medial to the nipples.