



MyLab Management for active learning and better performance

Instructor: Dr Norber Sipos

Institution: University of Pécs, Hungary

Title: [Robbins-Coulter: Fundamentals of Management](#)

Platform: MyLab Management

2024



Pearson



“The average scores were notably lower, typically below five out of ten, compared to the current average of 7.8 out of ten.” - Dr Norbert Sipos

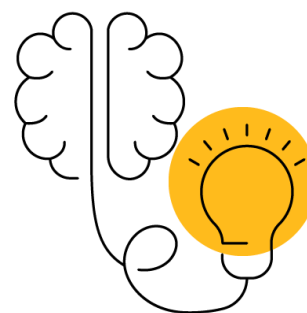
Course

I am teaching an **Introduction to Management** course within the Bachelor of Administration, Business Administration, and Management programmes. This course is the flagship of the Faculty of Business and Economics at the University of Pécs, Hungary, and is a fundamental requirement for all students.

The class size generally ranges from **60 to 80 students**, with participants coming from over **50 countries**. Around half of the students are from Hungary, while the rest come from various countries worldwide. Although this course runs in the second semester, students are still familiarising themselves with university expectations.

Course materials

I use [Fundamentals of Management by Robbins and Coulter](#) as the primary textbook. It provides a solid foundation for understanding management principles, which students can compare with their own countries' practices. This comparative approach helps deepen their understanding of the subject matter.



For more information please visit our websites

MyLab Management

<https://www.pearson.com/en-gb/higher-education/products-services/mylab/mylab-management.html>

Revel for Business&Management

<https://www.pearson.com/en-gb/higher-education/products-services/revel/business-management.html>



Pearson

Integration and credit

The course is divided into two parts: **theoretical lessons and quizzes**. I utilise the MyLab Management platform to facilitate quizzes and assessments, drawing questions directly from the textbook and Pearson's suggested teaching material.

MyLab Management has been an invaluable tool for **engaging students and tracking their progress**. I really like the feature of MyLab Management that actually **connects students directly to the book**, as this encourages them to interact with the material more deeply.

Students earn **mastery points** through quizzes, which serve as **prerequisites for final assessments**. They can attempt quizzes twice, and successful completion earns them points towards their final grade. This system ensures that students **review** and understand the material **regularly**.

Communication

While there were initial challenges in getting students registered and familiarised with the platform, **consistent communication** and support largely resolved these issues by the fourth week of the course. I send **personalised emails** with registration information and **remind** students to check their official university email addresses. Despite occasional hurdles, such as name changes in the system, MyLab has streamlined the process of tracking and registering student performance.

"I really like the feature of MyLab Management that actually connects students directly to the book."

“From my end, setting it up at the beginning of the semester and managing weekly downloads takes minimal time.”

Personal favourite features

What I particularly like about MyLab is its **direct connection to the textbook**. This means students don't need to register on multiple platforms or find a physical copy; they can access everything online. The unlimited attempts at Mastery Points allow them to review and fill knowledge gaps instantaneously.

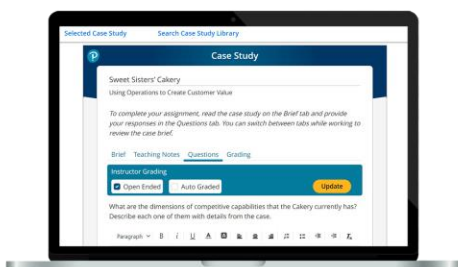
From my end, setting it up at the beginning of the semester and managing weekly downloads takes **minimal time**.

This system ensures that students **engage with the material regularly**, rather than just attending lectures and not interacting with the content.

The greatest benefit for students is the convenience and structure MyLab provides. They can **keep up with the coursework** even if they're unable to attend classes physically, as evidenced by a student who successfully kept up while participating in a four-week project. MyLab's integration means they don't need to visit the library or switch platforms to study, enabling a **seamless learning experience** that aligns perfectly with the semester's structure.

Benefits

This is my second year using MyLab, and it has proven to be a **double benefit**, aiding both my teaching and the students' learning experience. I can tell about this platform only positive things and really recommend it to everyone. The platform is **intuitive** and aligns perfectly with my teaching goals, ensuring that students engage with the material throughout the semester rather than cramming just before exams. **Regular interaction** with the content through MyLab quizzes reinforces their understanding and preparation for mid-term and final exams.



“This system ensures that students engage with the material regularly, rather than just attending lectures and not interacting with the content.”



Pearson

“The platform seems to be contributing to more active learning and better overall results.”

What students say

Before integrating MyLab Management into the course, I ran it for two or three years using Moodle for quizzes. The average scores were notably lower, typically below five out of ten, compared to the current average of 7.8 out of ten. This improvement indicates that students are earning more points and likely engaging better with the material. Initially, students were sceptical about using a new platform, but by the fifth week, they began to see the benefits and provided positive feedback.

Despite the initial resistance, students appreciated the structured approach MyLab Management offers, helping them stay on schedule. The practice part of the course, though not directly linked to MyLab Management, has also seen high engagement, with many students achieving full marks. I believe this improved performance and engagement are partly due to MyLab Management, even if I can't directly prove it. The platform seems to be contributing to more active learning and better overall results.

Summary

I believe MyLab Management is highly beneficial for students as it provides clear instructions and a logical structure, making it easy to use. Initially, students might be hesitant, but once they go through the instructions, they find the platform helpful. MyLab Management offers adaptive learning features that adjust to students' activities and challenges, though these advanced features might not be necessary in the first year. By focusing on the platform's user-friendly and beneficial elements, students can develop a willingness to engage with it more readily.